

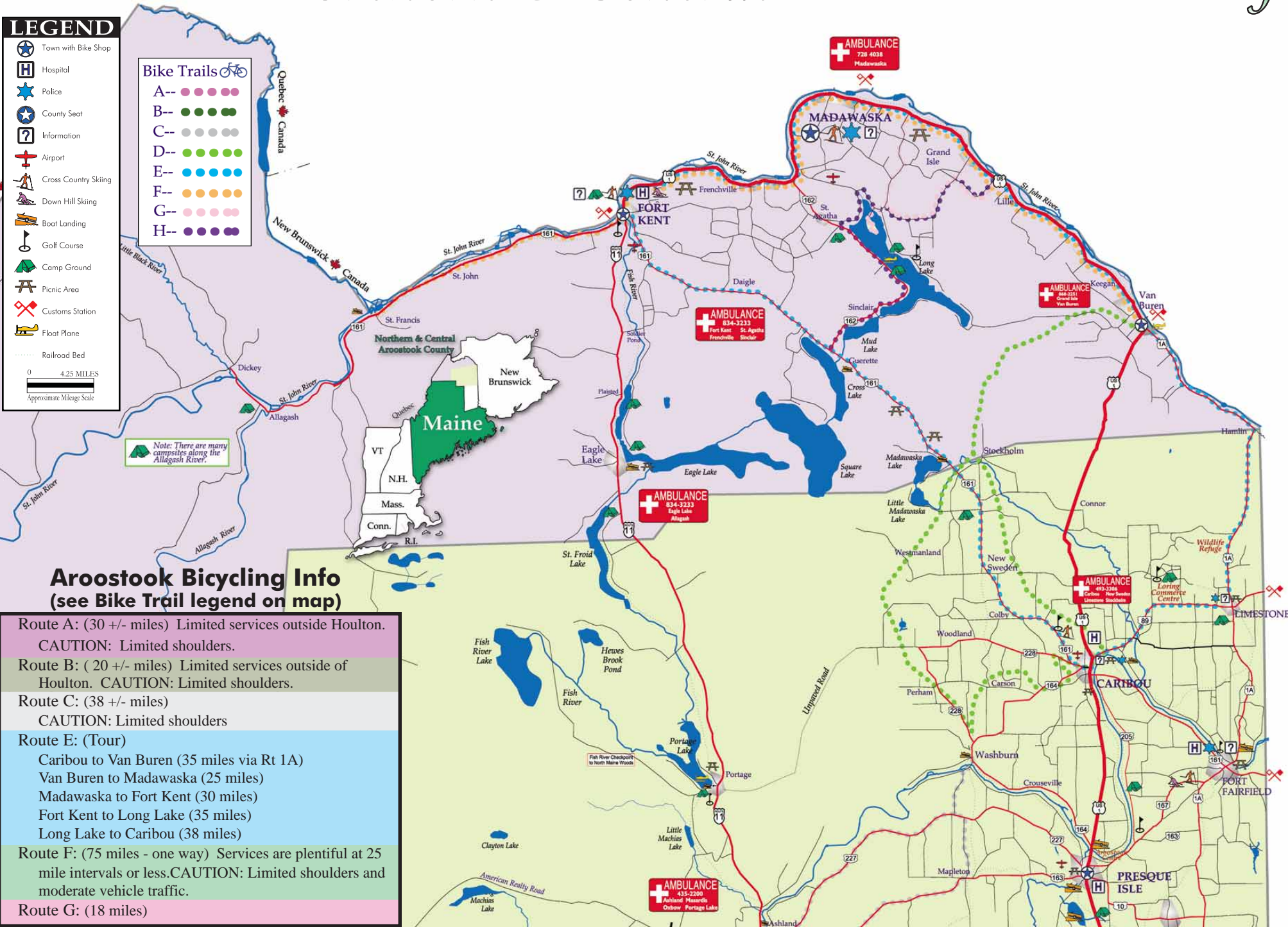
Northern & Central Aroostook County

LEGEND

- Town with Bike Shop
- Hospital
- Police
- County Seat
- Information
- Airport
- Cross Country Skiing
- Down Hill Skiing
- Boat Landing
- Golf Course
- Camp Ground
- Picnic Area
- Customs Station
- Float Plane
- Railroad Bed

- ### Bike Trails
- A--
 - B--
 - C--
 - D--
 - E--
 - F--
 - G--
 - H--

Note: There are many campsites along the Allagash River.



Aroostook Bicycling Info (see Bike Trail legend on map)

- Route A: (30 +/- miles) Limited services outside Houlton.
CAUTION: Limited shoulders.
- Route B: (20 +/- miles) Limited services outside of Houlton. CAUTION: Limited shoulders.
- Route C: (38 +/- miles)
CAUTION: Limited shoulders
- Route E: (Tour)
Caribou to Van Buren (35 miles via Rt 1A)
Van Buren to Madawaska (25 miles)
Madawaska to Fort Kent (30 miles)
Fort Kent to Long Lake (35 miles)
Long Lake to Caribou (38 miles)
- Route F: (75 miles - one way) Services are plentiful at 25 mile intervals or less. CAUTION: Limited shoulders and moderate vehicle traffic.
- Route G: (18 miles)